

# CITY IN TIME 城市景昔

Experience CITY IN TIME  
Time travel in Hong Kong

## Tsim Sha Tsui 尖沙咀

### Past and Present of the Community

Discover the Historical Transformation  
of Tsim Sha Tsui

### City Walk

Timeless Heritage  
and Iconic Landmarks

CITY IN TIME  
Feature

CITY IN  
城市景昔  
TIME



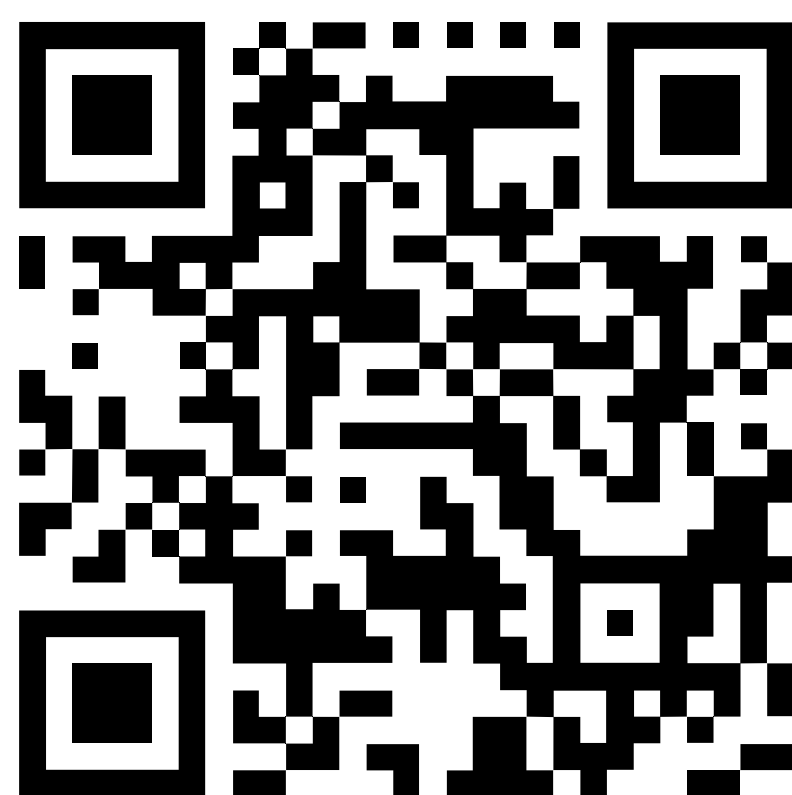
# Route

## •-----• Tsim Sha Tsui



As a must-see attraction of Hong Kong, Tsim Sha Tsui combines centuries of history with the vibrant spirit of a modern city. Today, it has evolved into a global cultural hub with every location reflecting signs of the City's development. Stroll through this area, you'll discover century-old buildings juxtaposed with modern skyscrapers and museums coexisting harmoniously with shopping malls. When visiting Tsim Sha Tsui, remember to download the "CITY IN TIME" mobile app to gain a deeper understanding of the district's transformation by comparing historical images.

Download the  
**CITY IN**  
城市景昔  
**TIME**  
mobile app



### CITY IN TIME AR



The six "CITY IN TIME" AR Clocks have been installed across the streets and alleys of Tsim Sha Tsui including Nathan Road, Kowloon Park Drive (near the YMCA of Hong Kong), the Clock Tower, the Tsim Sha Tsui Promenade, Salisbury Road (near the Hong Kong Cultural Centre), and Salisbury Garden. Follow this guide and stroll through Tsim Sha Tsui, with the "CITY IN TIME" mobile app to uncover the community's past.

# Tsim Sha Tsui Map



- 1 Nathan Road
- 2 Former Marine Police Headquarters & Time Ball Tower
- 3 Clock Tower
- 4 Tsim Sha Tsui Promenade
- 5 YMCA of Hong Kong
- 6 The Peninsula Hotel



## Duration 43 mins

**Distance 3 km**

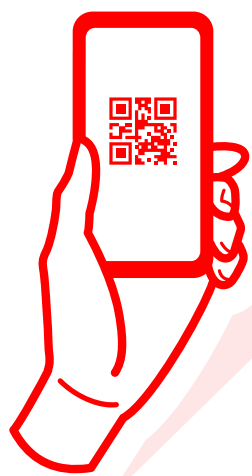
# Nathan Road

Nathan Road is a major thoroughfare in Kowloon. It was constructed in 1860 and it was originally called “Robinson Road”. “Robinson Road” began as a narrow and desolate path until it underwent significant expansion in 1904 under the direction of Governor Sir Matthew Nathan. The construction was completed in 1909. When authorities noticed multiple streets sharing identical names across Hong Kong Island and Kowloon, they renamed it Nathan Road. Today, Nathan Road has become a bustling commercial road lined with shopping malls and retail stores making it a popular destination for visitors.

Spot 1



掃描這裡 Scan This



Simply scan the AR clock located on Nathan Road with the “CITY IN TIME” mobile app to travel back to the Hong Kong of the 1860s. Through breathtaking panoramic artwork created by local artist Wong Chun Hei, you can experience scene of cargo ships crowding the waterfront and lighters shuttling between vessels.

## Recommendations

# Signal Hill Garden

This small hill was originally called Blackhead’s Point, named after the trading company Blackhead & Co. at its foothill. In 1907, the Time Ball Tower, previously located in front of the Marine Police Headquarters, was relocated here. From the following year, it provided timekeeping services for ships and the public. From 1920 to 1933, the signal tower communicated with vessels using flag semaphores and light signals, thus it became known as Signal Hill.



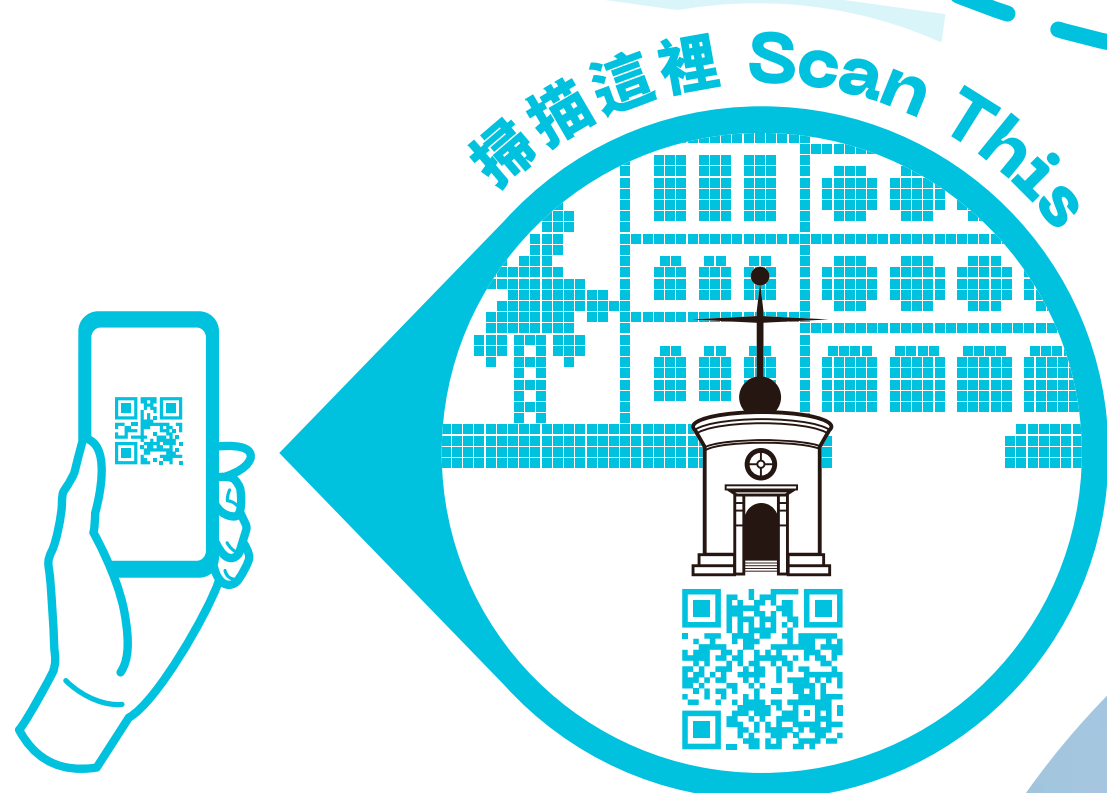
Address: Minden Row, Tsim Sha Tsui



Spot 2

# Former Marine Police Headquarters & Time Ball Tower

The former Marine Police Headquarters was built in 1884 and consists of a main building, a stable block and a Time Ball Tower. The architecture combines Victorian and Neoclassical styles. The Time Ball Tower provided time information to seamen. Each morning, the Time Ball was manually raised and then lowered at 1:00 p.m. The Time Ball allowed ships at the sea to adjust their meridians and calculate their positions. The Time Ball Tower ceased operation in 1907 and the Marine Police moved out in 1996. The historic building complex was revitalized in 2003 and become the 1881 Heritage.



Use the “CITY IN TIME” mobile app to scan the AR clock located on Kowloon Park Drive (near the YMCA of Hong Kong) to experience the historical scene of the lowering of the Time Ball through an immersive panoramic recreation by local artist Wong Chun Hei.



Address: 2A Canton Road, Tsim Sha Tsui  
Year of Establishment: 1884

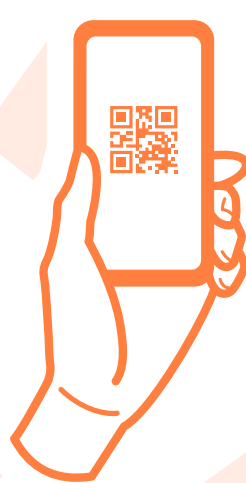
# Hong Kong Clock Tower

Spot 3

The Tsim Sha Tsui Clock Tower was originally part of the Kowloon-Canton Railway Terminus. The clock was initially battery-operated with separate dials, resulting in discrepancies between the four faces. It has since been replaced with advanced machinery and resumed timekeeping in 2021. The public and visitors can hear its chimes hourly from 8:00 a.m. to midnight.



Use the “CITY IN TIME” mobile app to scan the AR clock near the clock tower and travel back to the bustling transportation hub of the 1930s. The panoramic image recreates the scene of a single-decker bus, allowing you to experience the past Tsim Sha Tsui.



掃描這裡 Scan This



## Experience CITY IN TIME “Cold War” filming location



The Clock Tower has served as a filming location for numerous Hong Kong films including the blockbuster “Cold War.” Use the “CITY IN TIME” mobile app to scan the AR clock near the tower to relive the class scenes of the movie!

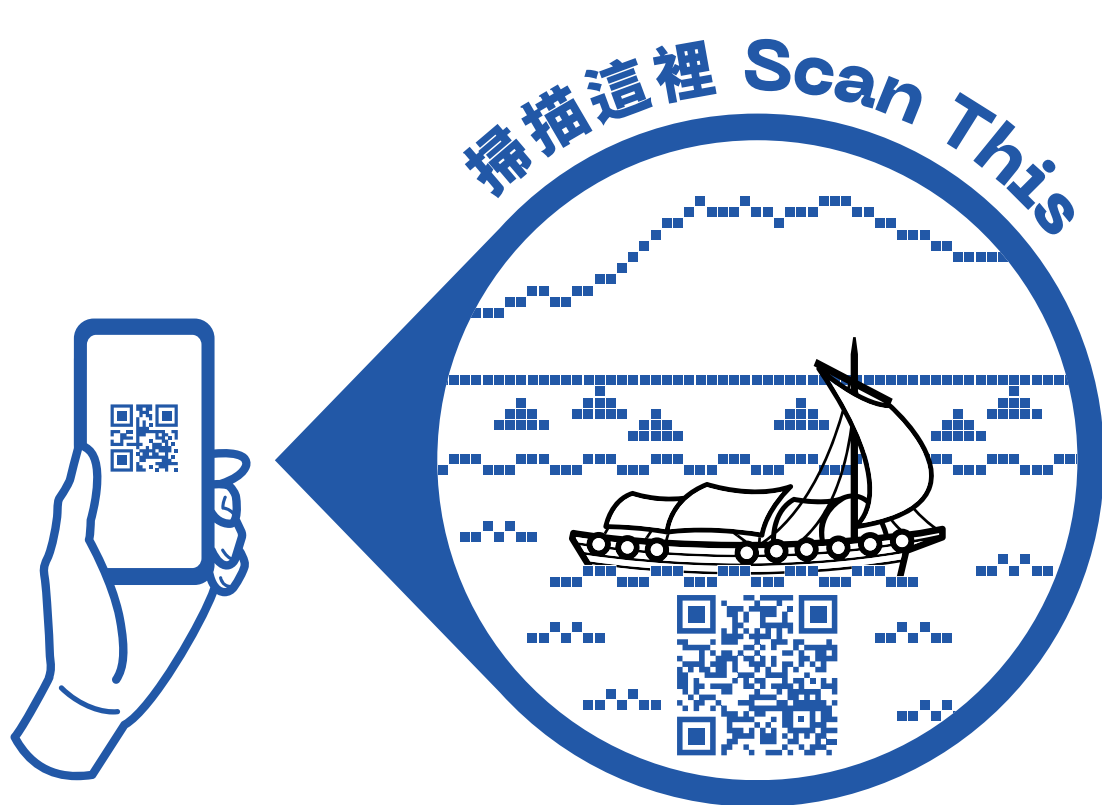
# Tsim Sha Tsui Promenade

Spot 4



Victoria Harbour is a natural deep-water haven separating Hong Kong Island and Kowloon. Its coastline has undergone numerous transformation through land reclamation. The current site was once the seaside in the 1950s. The nearby Blue Funnel Pier, adjacent to the Kowloon-Canton Railway, was once one of the Hong Kong's major warehouse terminals and played a crucial role in rail and sea freight, contributing to Hong Kong's global logistics. Today, it is a leisure promenade where visitors enjoy the multimedia light show “A Symphony of Lights” at 8:00 p.m. every night.

Scan the AR clock at the Tsim Sha Tsui waterfront to experience the historical panorama of the busy Blue Funnel Pier filled with cargo ships in the 1950s.



## Experience CITY IN TIME “Curry and Pepper” filming location



Tsim Sha Tsui's promenade was the filming location for the 1990s Hong Kong film “Curry and Pepper.” Use the “CITY IN TIME” mobile app to scan the AR clock located on the Tsim Sha Tsui waterfront and relive the movie scenes at the filming location!

# YMCA of Hong Kong

The YMCA of Hong Kong is one of the essential registered charities. In 1922, the YMCA secured a site at Salisbury Road, and the building was constructed two years later. The YMCA expanded rapidly in the 1950s and the building was reconstructed into a 16-story complex in 1989. Three years later, kindergartens and professional training colleges were added to broaden services for the public.

Spot 5



掃描這裡 Scan This



Use the “CITY IN TIME” mobile app to scan the AR clock on Salisbury Road to view panoramic images recreating the YMCA’s architecture in the 1950s created by artist Pen So.

Address: 41 Salisbury Road, Tsim Sha Tsui

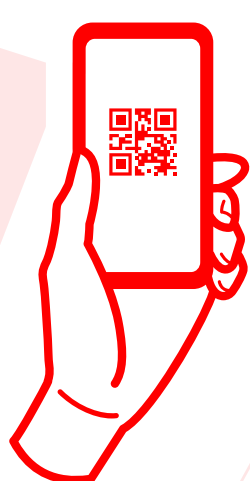
Spot 6

# The Peninsula Hong Kong

Completed in 1928, The Peninsula Hong Kong, built in Baroque Neoclassical style, is one of the oldest hotels in Hong Kong's history. Once hailed as "the most luxurious and magnificent hotel from east of the Suez Canal", it earned the nickname "Grande Dame of the Far East". The Lobby, renowned for its beauty, attracts visitors to enjoy the afternoon tea. In 1970, the hotel purchased seven Rolls-Royce Silver Shadow cars, painted in iconic "Peninsula Brewster Green". Until today, the hotel still maintains a luxurious Rolls-Royces fleet.

Use the "CITY IN TIME" mobile app to scan the AR clock in Salisbury Garden to experience a panoramic historical image of The Peninsula Hotel in 1958 with its iconic Rolls-Royce fleet welcoming guests.

掃描這裡 Scan This



## Experience CITY IN TIME “Everlasting Love” filming location

Courtesy of Johnny Mak Production Co., Ltd

The Peninsula Hong Kong's lobby is a must-see attraction for movie buffs as it has been the film setting for countless romantic films. Use the "CITY IN TIME" mobile app to scan the AR clock to relive the moment when the protagonists met in "Everlasting Love" !

**Address: 22 Salisbury Road, Tsim Sha Tsui**  
**Year of Establishment: 1928**

## CITY IN TIME 城市景昔



All information records as of September 2025, and is subject to change without prior notice. Hong Kong Tourism Commission disclaims any liability for the quality or fitness for the purpose of third-party products or services; or for any errors or omissions.

© Copyright Hong Kong Tourism Commission 2025