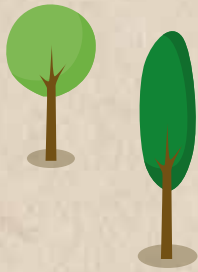


Lai Chi Wo Hiking Tour



Dating back to 400 years ago, Lai Chi Wo was once among the most affluent villages in the Northeastern New Territories. The houses and the *feng shui* woods behind the village remain well preserved. The guided tour leads you to the largest bed of Coastal Heritiera (*Heritiera littoralis*) in Hong Kong and the White-flower Derris which forms a 'natural swing' along the mangroves. Following the coastline, you will see the impressive reddish landscape caused by 400 million years of rock oxidation.



Frequency:

Mondays to Fridays

Departure Time/Duration:

10am; approximately 8 hours

Language:

English

Tour Price:

HK\$1,000/person (Lunch included. Minimum 3, maximum 20 people)

Enquiries:

Walk Hong Kong Ltd
Walks@walkhongkong.com

+852 9187 8641
www.walkhongkong.com

**GREAT OUTDOORS
HONG KONG**
2017-2018



Information is correct as of January 2018, but is subject to change without prior notice. Hong Kong Tourism Board disclaims any liability for the quality or fitness for the purpose of third-party products or services; or for any errors or omissions.

© Copyright Hong Kong Tourism Board 2018

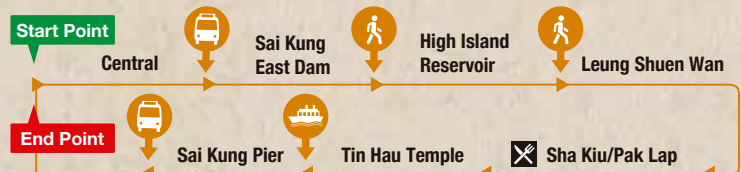
Guided Hiking Tours

Check out the following tours for a closer look at Hong Kong's lesser-known natural treasures!

- Professionally qualified geo-tour guides
- Get a deeper understanding of the unique geology and ecology
- Hassle-free fun: all the planning's been done for you!

Geopark Hiking Tour

The long and sinuous coastline at Sai Kung is a natural geological gallery, featuring spectacular landforms and rock formations shaped by volcanic activities 140 million years ago as well as waves and weathering. The guided tour takes you through magnificent hexagonal columnar joints, a natural tombolo at Sharp Island and an inland water dam wall at High Island Reservoir.



Frequency:

Mondays to Fridays

Departure Time/Duration:

8:30am; approximately 8 hours

Language:

English

Tour Price:

HK\$1,000/person (Lunch included. Minimum 3, maximum 20 people)

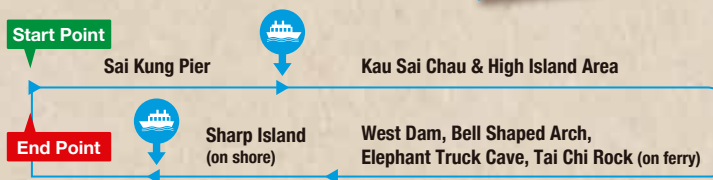
Enquiries:

Walk Hong Kong Ltd
Walks@walkhongkong.com

+852 9187 8641
walkhongkong.com

Geopark Boat Tour: Sai Kung Islands

Sai Kung boasts the longest stretch of coastline and the most numerous outlying islands in Hong Kong, with unique scenery and extraordinary rugged profiles. The tour guides you through the region's rich geodiversity which includes magnificent sea stacks, breathtaking tubular rock columns and sea caves, typical coastal terrain, the rare acidic hexagonal volcanic rock columns of High Island, and rhyolite on Sharp Island.



Frequency:
Daily

Departure Time/Duration:
9am/2pm; approximately 3 hours

Language:
English/Mandarin/Chinese

Tour Price:
HK\$975/person
(Minimum 3, maximum 20 people.
Please book 2 days in advance.)

Enquiries:

ECO Travel Limited
enquiry@ecotravel.hk

+852 3105 0767
hongkong.ecotravel.hk

Rock Academy — Sai Kung Volcanic Rock Region

There is evidence of volcanic activities in Hong Kong dating back 140 million years. In Sai Kung, there is a caldera, which is the result of a volcanic eruption. This guided tour will take you through interesting geological formations to explore aged rocks specimens, minerals, fossils and evidence of tidal influences. You will get a chance to walk over a naturally occurring 250-metre-long tombolo on Sharp Island to reach Kiu Tau, before paying a visit to the Volcano Discovery Centre at Sai Kung Pier and Lions Nature Education Centre in Tsiu Hang.



Frequency:
Every Monday, Wednesday,
Thursday, Friday, Saturday and Sunday

Departure Time/Duration:
9am; approximately 5 hours

Language:
English/Mandarin/Chinese

Tour Price:
HK\$450/person
(Minimum 3, maximum 12 people)

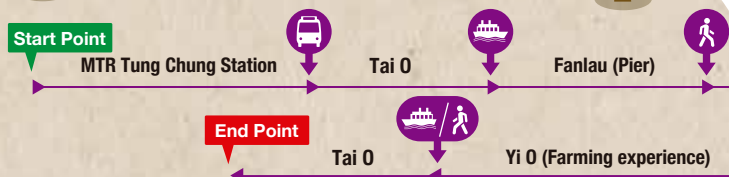
Enquiries:

HS Travel International Company Limited
tour@hstvl.com

+852 3759 7081
www.tour3g.com

Lantau South in-depth Agriculture Fishery and Heritage Tourism

Lantau Island is rich in ecological resources. Due to its geographic limitations, Tai O, an area on the island, was much slower to urbanise, and to this day retains a wealth of eco-cultural treasures, including stilt houses, salt field relics and Chinese White Dolphins which live in the waters surrounding the area. Visitors can experience farming at the nearby village of Yi O, where terraced rice paddies can still be found. This guided tour provides flexible transportation for visitors to travel through Tai O, Yi O and Fanlau.



* walking or taking boat ride is subject to the tide level

Frequency:
Every Monday, Thursday, Friday,
Saturday and Sunday

Departure Time/Duration:
9am; approximately 5 hours

Language:
English/Mandarin/Chinese

Tour Price:
HK\$450/person
(Lunch optional: Farm-to-table lunch
at Yi O for HK\$100/person)
(Minimum 6, maximum 24 people)

Enquiries:

Eastern Coast Travel (HK) Ltd
office@ectravel.hk

+852 2730 9123
www.ectravel.hk